



C.W. Brabender®
INSTRUMENTS, INC.

Twin Screw Extruder Attachment for Compounding and Laboratory Simulation

The basic steps of compounding can be perfectly realized with co-rotating twin screw extruders -- making modular co-rotating twin screw extruders the ideal companion for plastics from synthesis up to recycling.

Profit from the harmonized, modular conception of screws and barrels for optimally realizing all processing steps (feeding, conveying, plasticizing, dispersing, reacting, venting, pressure build-up). The system configuration of each model can easily be adapted to the individual processing task - anytime and at low cost.

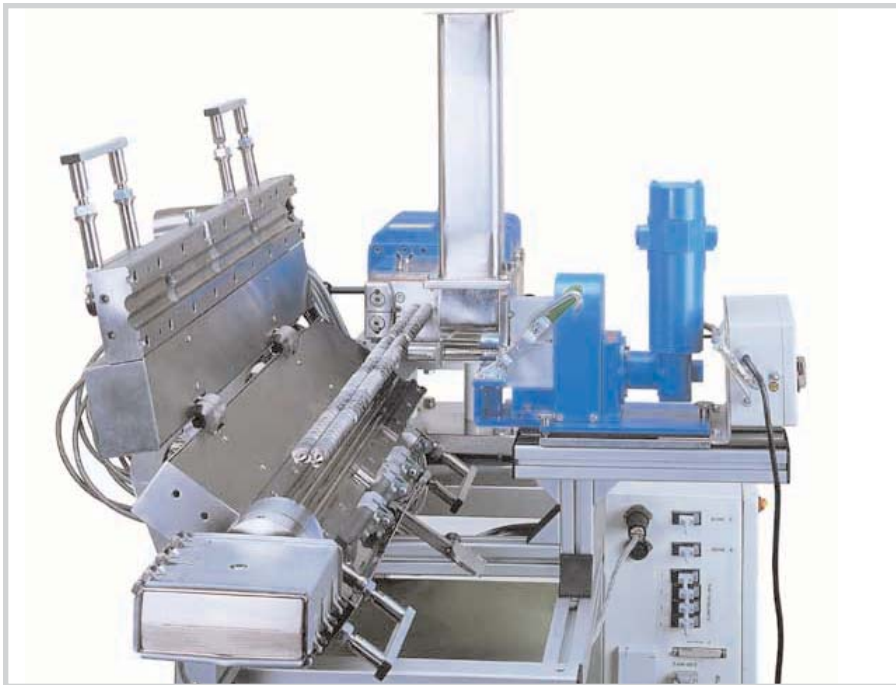
Combine several processing steps within a continuously working extruder and use your C.W. Brabender® twin

screw extruder as a modern in-line compounder.

Depending on the extruder size, the material to be tested, and the processing task, throughputs up to 20 kg/h can be reached -- the flexibility and high performance of the TSE 20/40 twin screw technology allows for optimum application adaptation to range from laboratory and small-scale production to include all processing tasks relevant to various polymers.

Extensive additional equipment like measuring and control units or metering systems (gravimetric, volumetric, liquid) as well as downstream equipment is available in order to create modular turn-key construction of complete extrusion lines.

**TSE 20/40
Twin Screw
Extruder
Attachment**



- 20mm Parallel • Clam Shell Barrel • Co-rotating
- Segmented Screw Elements

TSE 20/40 Clam-Shell

TSE 20/40
Blending of a polyphenylene oxide



Technical Data

The TSE 20/40 is available with barrel lengths of 20 or 40 D. Metering and/or venting ports are located at 10 D, 20 D, and 30 D with side feeding capabilities (12 D and 22 D). Furthermore, the barrel of the TSE 20/40 is divided horizontally, and can be tilted open on both sides. Allowing visual assessment of individual processing steps. Ideally suited for Research and Development applications.

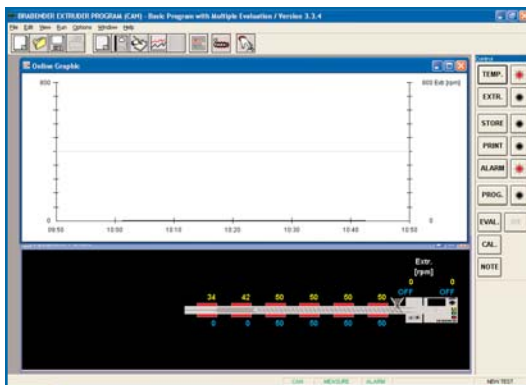
Screw Diameter	Screw Length L:D	Flight Depth	Drive Power	Screw Speed (min ⁻¹)	Screw Torque	Operating Temperature
20mm	24,40	3.75mm	*variable	150	2 x 40 Nm	450 °C

* Attachment for Lab-Station or Intelli-Torque Plasti-Corder ®

Maximum Throughputs (kg/h)

Compounding and stabilizing of HDPE	9-15
Filling, incorporation of 40% talc in PE powder	9-15
Reinforcing, incorporation of glass fibers (33%) in PA 6.6	9-12
Production of masterbatch in LDPE, HDPE, PP, PS, PA	10-20

S
o
f
t
w
a
r
e



- Graphic Interface
 - Alarms - Temperature - Pressure - Torque - Auxiliary Speeds
- Protocol Storage
- Data Logging
 - Temperature - Pressure - RPM - Torque - Auxiliary Speeds



C.W. Brabender®
INSTRUMENTS, INC.

C.W. Brabender® Instruments, Inc. • 50 East Wesley Street, South Hackensack, NJ 07606
Tel: 201.343.8425 • Fax: 201.343.0608
E-Mail: cwbi@cwbrabender.com • www.cwbrabender.com